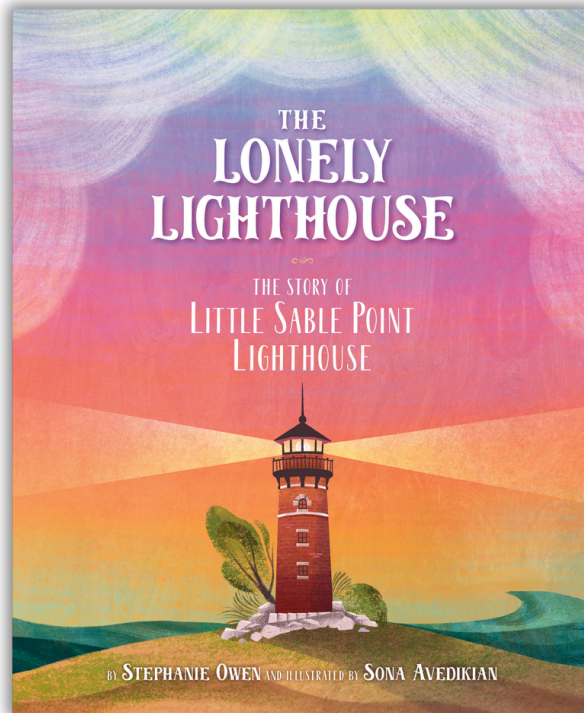


***Teacher's Guide
& Classroom Activities***
1st Grade



***The Lonely Lighthouse: The Story
of Little Sable Point Lighthouse.***

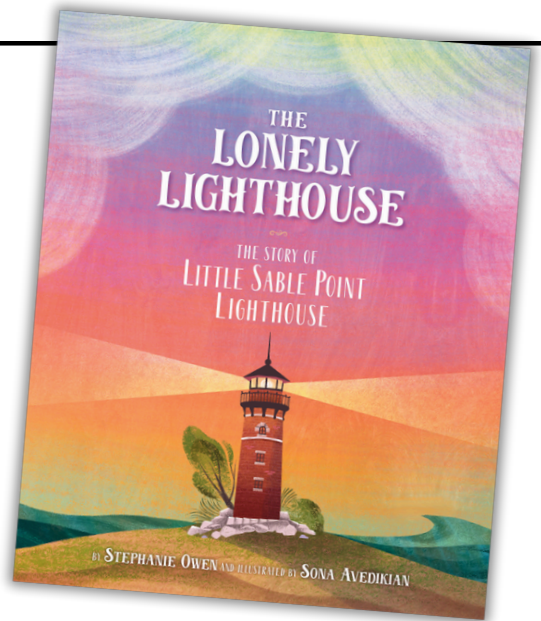
Author: Stephanie Owen
Illustrator: by Sona Avedikian

Guide created by Stephanie Owen

Published by
Sleeping Bear Press
2395 S. Huron Parkway Suite 200
Ann Arbor, MI 48104
(734) 619-6226

Instructions: Circle the proper nouns, and underline the common nouns in each sentence.

CCSS.ELA-Literacy.L.1.1.B
CCSS.ELA-Literacy.L.K.1.D



Example: The book is called
The Lonely Lighthouse.

1. The lighthouse is in Michigan.
2. James Davenport was the first keeper.
3. Workers began to build in April of 1873.
4. Little Sable Point Lighthouse is made of bricks.

Instructions: Circle the correct form of the verb for each sentence.

CCSS.ELA-Literacy.L.1.1.C

Example: The lighthouse (shine shines).

1. The keeper (clean cleans) the windows.

2. Boats (pass passes) the lighthouse.

3. People (visit visits) the lighthouse every day.

4. Seagulls (fly flies) over the water.

Instructions: Fill in the blank with the correct pronoun.

CCSS.ELA-Literacy.L.1.1.D

It He its They my

1. The keeper works hard. _____ cleans everyday.
2. The lighthouse shines. _____ is very bright.
3. Many boats sail past the lighthouse. _____ sail through the water.
4. I like to visit the lighthouse with _____ family.
5. The lighthouse shines _____ light.

Instructions: Fill in the blank with the correct verb.

CCSS.ELA-Literacy.L.1.1.E

lights will light lit

1. Yesterday the keeper _____ the lamp.
2. Today the keeper _____ the lamp.
3. Tomorrow the keeper _____ the lamp.

Instructions: Fill in the blank with the correct adjective according to the images.

CCSS.ELA-Literacy.L.1.1.F

1. The lighthouse is _____.



2. The keeper is _____.



3. The water is _____.



Instructions: Fill in the blank with the correct conjunction.

CCSS.ELA-Literacy.L.1.1.G

and but or

1. The keeper swept yesterday, _____ there is more sand today.
2. The keeper will climb the steps, _____ light the lamp every day.
3. Will the keeper clean the windows first, _____ sweep the floors first?

Instructions: Add commas where they belong in the sentences below.

CCSS.ELA-Literacy.L.1.2.C

1. The lighthouse keeper must clean polish and oil the gears.
2. On September 28 1900, Little Sable Point Lighthouse was painted white.
3. There was a major storm on Lake Michigan on November 11 1940.
4. A lighthouse needs a lamp oil and a lens in order to shine.

Instructions: Rewrite each sentence with correct capitalization and punctuation.

CCSS.ELA-Literacy.L.1.2.A

CCSS.ELA-Literacy.L.1.2.B

1. little sable point lighthouse was built in 1874

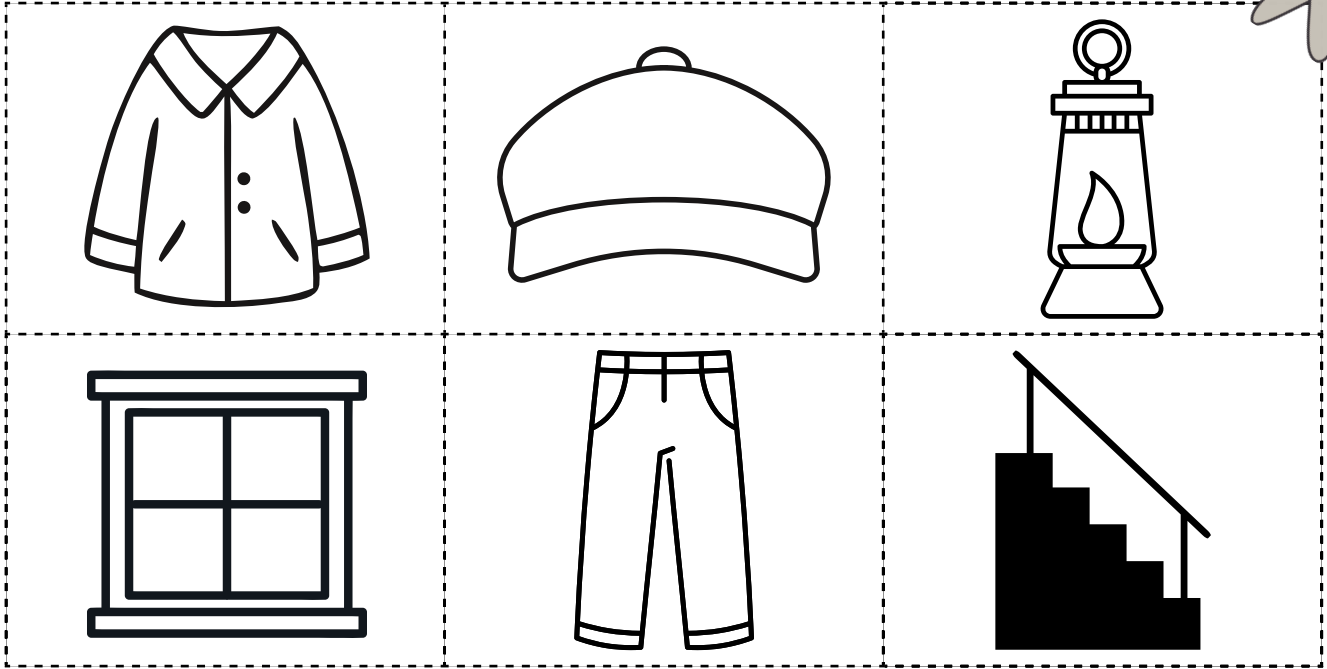
2. Construction of the lighthouse began in april

3. Was the first keeper james davenport

Instructions:

Cut, sort, and paste the pictures of items that a keeper wears, and the items that are part of the lighthouse.

CCSS.ELA-Literacy.L.K.5.A



Keepers Clothes

Parts of the Lighthouse

Instructions:

Match each word to its opposite.

CCSS.ELA-Literacy.L.K.5.B

light



dirty



hot



dark



clean



young



old



cold

