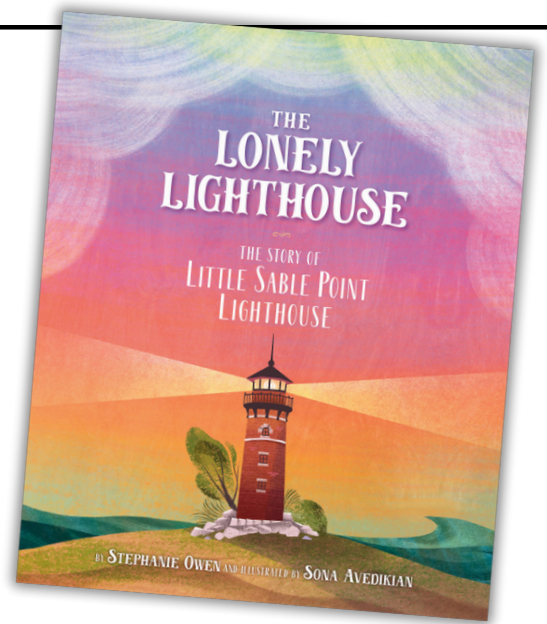


There are many questions in *The Lonely Lighthouse: The Story of Little Sable Point Lighthouse*.



Fill in the blank with the correct question word.

CCSS.ELA-Literacy.L.K.1.D

Who	What	Where	When	Why	How
------------	-------------	--------------	-------------	------------	------------

1. _____ takes care of a lighthouse?
2. _____ does a lighthouse keeper do?
3. _____ is Little Sable Point Lighthouse located?
4. _____ does a lighthouse need to shine at night?
5. _____ was Little Sable Point Lighthouse built?
6. _____ many keepers worked at Little Sable Point Lighthouse?

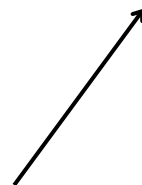
Instructions:

1. Rewrite the first word of each sentence so it is capitalized.
2. Then match the name of the end punctuation to the correct sentence.

CCSS.ELA-Literacy.L.K.2.A
CCSS.ELA-Literacy.L.K.2.B

Example: the keeper takes care of the lighthouse.

The



- little Sable Point Lighthouse was built in 1874.

Period

- i love visiting the lighthouse!

Question
Mark

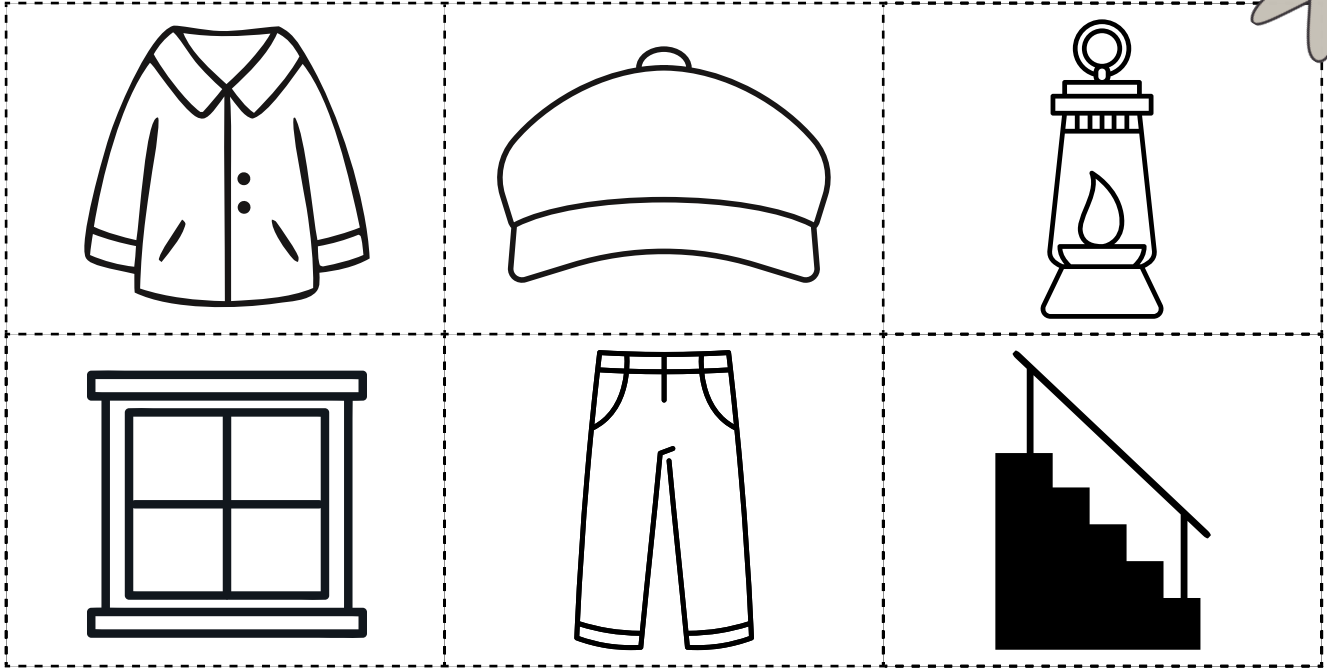
- how many steps does the lighthouse have?

Exclamation
Point

Instructions:

Cut, sort, and paste the pictures of items that a keeper wears, and the items that are part of the lighthouse.

CCSS.ELA-Literacy.L.K.5.A



Keepers Clothes

Parts of the Lighthouse

Instructions:

Match each word to its opposite.

CCSS.ELA-Literacy.L.K.5.B

light



dirty



hot



dark



clean



young



old



cold

